

Benoit Meire

$$\frac{3.5 + 3.75}{2} \times 19 = 68.87 \text{ m}^2$$

Van Mekeleke: Dierant  
Omer Hilleghe

De Ryck-huizen Omer

De Meuleleer De Ruw  
Harels Meire

$$4 \times 25 = 100 \text{ m}^2$$

Van Laethem-Lievens Remi  
Meire

$$4 \frac{1}{2} \times 20 = 90 \text{ m}^2$$

De Meuleleer - De Lammes Koud  
De Claires Basile Meire

$$\frac{1.5 + 1.3}{2} \times 13.5 = 15.53 \text{ m}^2$$
  
$$\frac{1.1 + 1.0}{2} \times 10.50 = 11.63 \text{ m}^2$$

De Saetleer De Ruw  
Meire

$$(0.4 + 1) \times 11.5 = 8.05 \text{ m}^2$$

De Ruw De Ruw  
De Ruw De Ruw  
De Ruw De Ruw  
De Ruw De Ruw

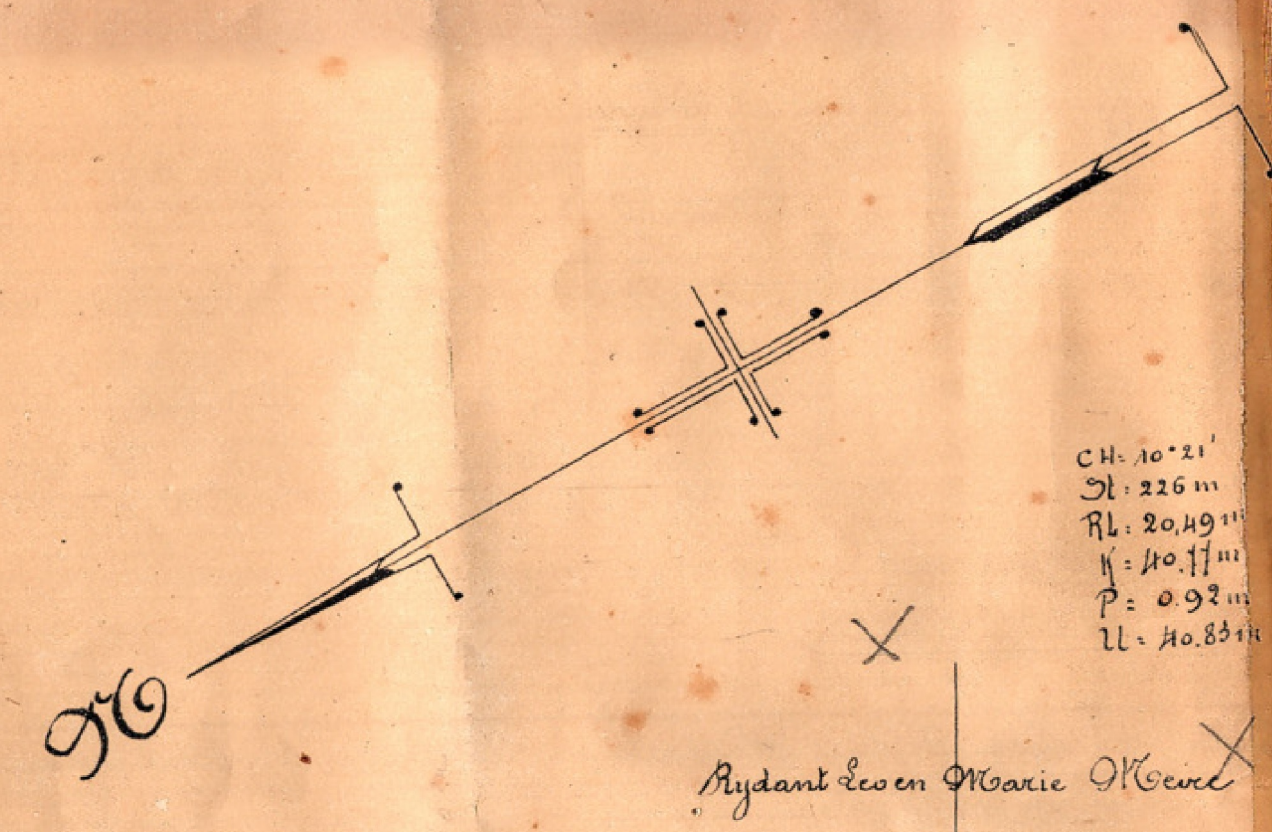
Bruins - Callebaut Omer Meire

$$\frac{(2 + 3.5 \times 9) + 3.5 + 6.5 \times 9}{2} = 159.75 \text{ m}^2$$

Van Cromphaut  
Van den Dulle  
Cyriel Meire

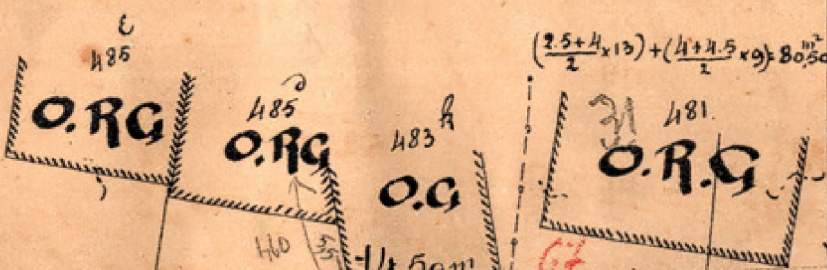
$$\frac{(3 \times 5.5) + (3.5 + 1.5 \times 2) + (9.5 + 12 \times 1.5)}{2} = 218.87 \text{ m}^2$$

$$\begin{aligned} \text{CH} &= 31 \times 15 \\ \text{Str} &= 4.5 \text{ m} \\ \text{RL} &= 15.17 \text{ m} \\ \text{K} &= 28.29 \text{ m} \\ \text{P} &= 2.36 \text{ m} \\ \text{U} &= 2925 \text{ m} \end{aligned}$$



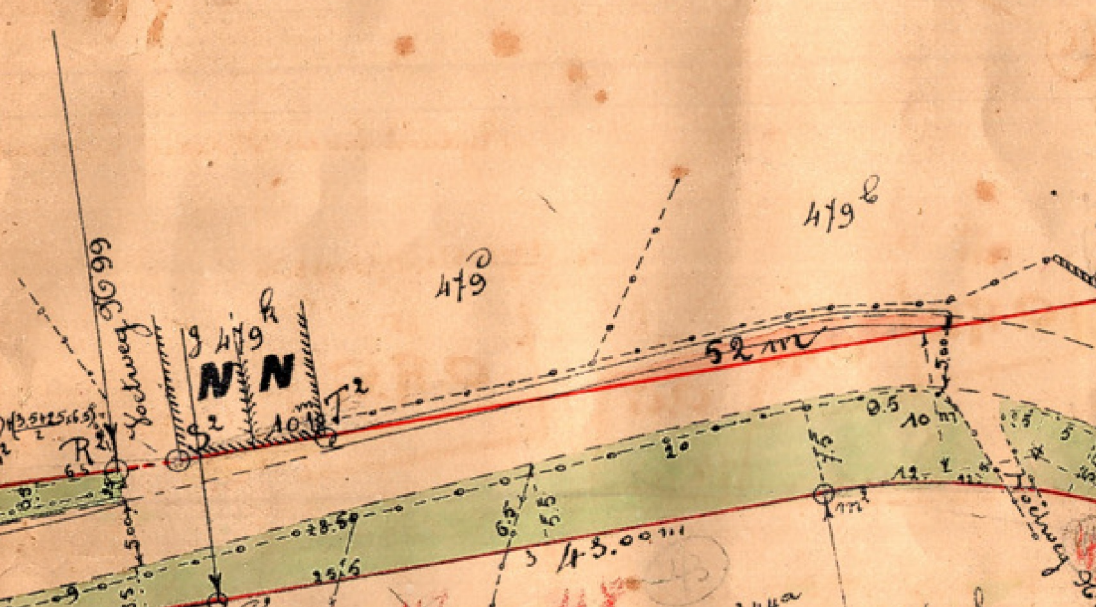
$$\begin{aligned} \text{CH} &= 10 \times 21 \\ \text{Str} &= 226 \text{ m} \\ \text{RL} &= 20.49 \text{ m} \\ \text{K} &= 110.17 \text{ m} \\ \text{P} &= 0.92 \text{ m} \\ \text{U} &= 110.83 \text{ m} \end{aligned}$$

Rydant Leo en Marie Meire



$$\frac{(2.5 + 4 \times 13) + (4 + 4.5 \times 9)}{2} = 80.50$$

$$\frac{(4.5 + 5 \times 10) + (5 + 4.5 \times 10) + (4 \times 10)}{2} = 115.50$$



Raes Vander Biech  
Raes De Meire

$$\begin{aligned} \text{CH} &= 9 \times 20 \\ \text{Str} &= 153 \text{ m} \\ \text{RL} &= 12.50 \text{ m} \\ \text{K} &= 24.90 \text{ m} \\ \text{P} &= 0.51 \text{ m} \\ \text{U} &= 24.92 \text{ m} \end{aligned}$$

Ottoy - Janssens